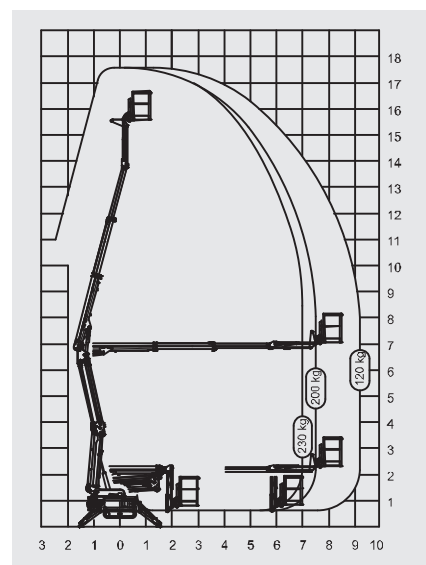
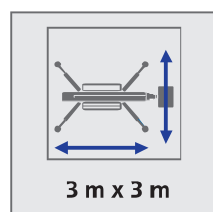
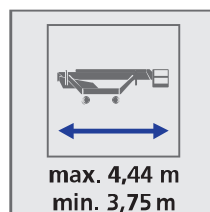
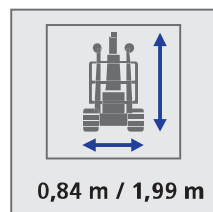




SA18 HB



TECHNISCHE DATEN / TECHNICAL DATA

Arbeitshöhe / working height, max.	17,8 m	Steigfähigkeit / gradeability, max.	28 %
Seitliche Reichweite / lateral outreach, max.	9,3 m	Benzinmotor / combustion engine	Honda iGX
Korblast / basket load	230 kg	Elektromotor / electric motor	230 V - 2,2 kW
Arbeitskorb / basket size	1,3 m x 0,7 m x 1,1 m	Flächenpressung unter Abstützung / ground pressure in working position	15,00 kN
Drehbereich / range of rotation	340°	Flächenpressung unter Kette / ground pressure under crawlers	56,98 kN/m ²
Eigengewicht / overall weight	2300 kg		
Fahrtgeschwindigkeit / travel speed, max.	1,5 km/h		

